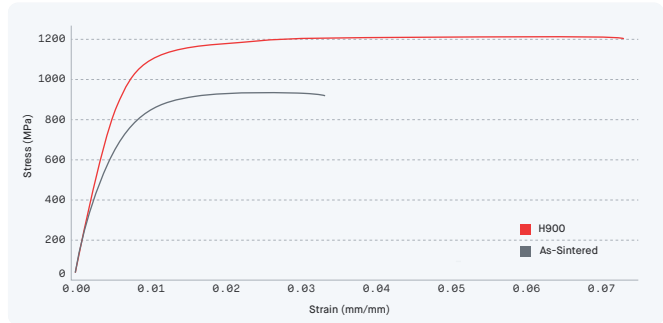


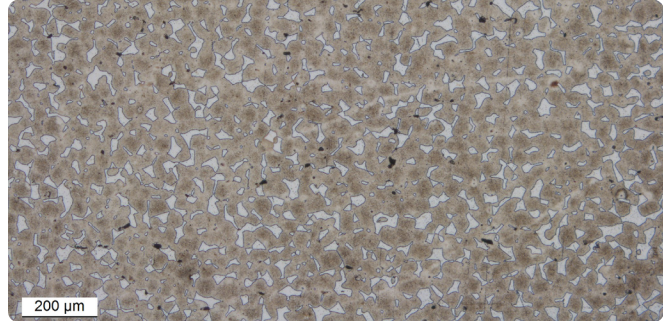
[Material Data Sheet]

# 17-4 PH Stainless Steel



**COMPOSITION %**

C	0.07 (max)
Cr	15.5 - 17.5
Ni	3 - 5
Cu	3 - 5
Mn	1.0 (max)
Si	1.0 (max)
Nb + Ta	0.15 - 0.45
Fe	Balance



**MECHANICAL PROPERTIES <sup>2</sup>**

Standard	Shop System™		MIM - MPIF 35 min <sup>2</sup>		
	As-Sintered	H900 Heat Treat	As-Sintered	H900 Heat Treat	
Yield strength (MPa)	ASTM E8M	<b>660±40</b>	650	<b>981±50</b>	970
Ultimate tensile strength (MPa)	ASTM E8M	<b>912±35</b>	790	<b>1205±35</b>	1070
Elongation at break (%)	ASTM E8M	<b>5.9±2</b>	4	<b>11.9±5</b>	4
Young's modulus (GPa)	ASTM E8M	<b>178±30</b>	190 (typ)	<b>185±20</b>	190 (typ)
Hardness (HRC)	ASTM E18	<b>26.4±1</b>	27 (typ)	<b>40.5±2</b>	35 (typ)
Density (g/cc)	ASTM B311	<b>7.5-7.66</b>	7.5	<b>7.5-7.66</b>	7.5

**SURFACE ROUGHNESS (@ 75 μM LAYER THICKNESS)**

xy (μm Ra)	<b>4.1</b>
z (μm Ra)	<b>8.0</b>

**OTHER STANDARD DESIGNATIONS <sup>1</sup>**

UNS S17400
EN 1.4542
ISO 4542-174-00-I

**RIVENDITORE AUTORIZZATO**

**Energy Group**

3D Printing Solutions for Industry

a SolidWorld Group company

BOLOGNA - TREVISO - MILANO - ANCONA  
info line 051 864519  
www.energygroup.it

**Technimold**

Industrial Additive Manufacturing

a SolidWorld Group company

GENOVA  
info line 010 6018463  
www.technimoldsistemi.com

**CAD Manager**

Additive Manufacturing Solutions

a SolidWorld Group company

FIRENZE  
info line 055 8071974  
www.cadmanager.it

1. Listed designations are for reference purposes only. Composition and mechanical properties may vary.  
2. Per MPIF Standard 35, Materials Standards for Metal Injection Molded Parts (MPIF 35-MIM, 2018). End-use material performance is impacted (+/-) by certain factors including but not limited to part geometry and design, application and evaluation conditions, etc.

End-use material performance is impacted (+/-) by certain factors including but not limited to part geometry and design, application and evaluation conditions, etc.